

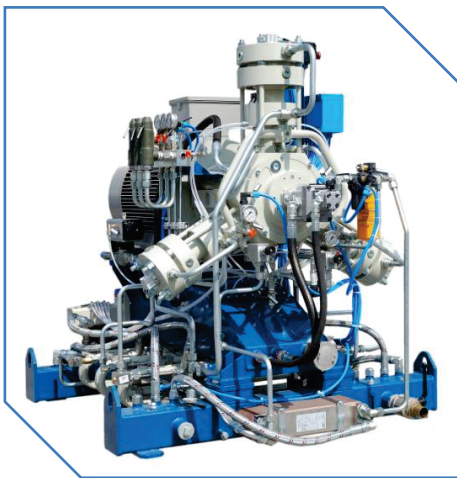
"ST" SERIES

"ST" compressors are SAFE mid size units suitable for operation with high inlet pressures.

These compressors are particularly suitable for filling stations with reduced investment costs and medium/high sales forecasts.

"ST" compressor is available also in booster version driven by gas engine to be installed on the trailer for **mobile stations**.

MAIN FEATURES:



Suction pressure: 8 ÷ 70 bar (max 250 bar in booster version)

Discharge pressure: 250 bar

Installed power: 22 ÷ 90 kW

N° cylinders / N° stages: 3, 4, 5 / 2, 3, 4

Valve lifter system

Air water cooling system

Driven by electric motor (gas engine in booster version)

High flow rate

Cost efficient solution

Simple and compact station layout

Minimized operating and maintenance cost

Minimized vibrations

